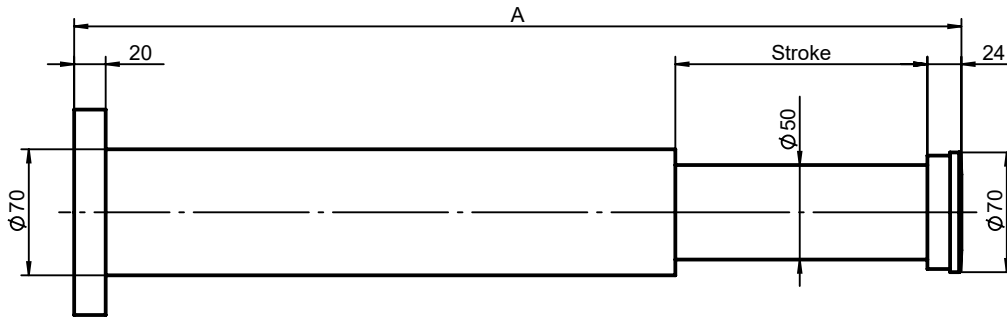
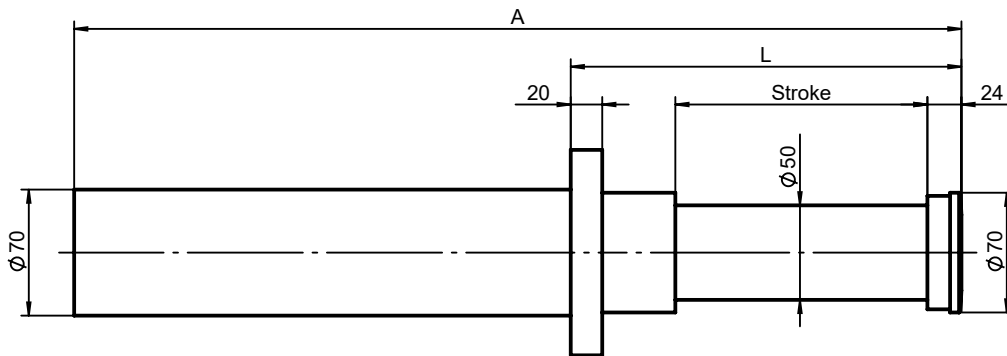
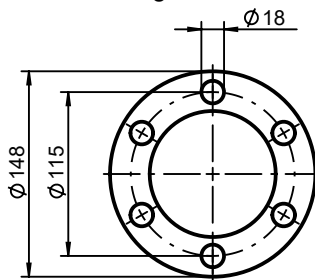
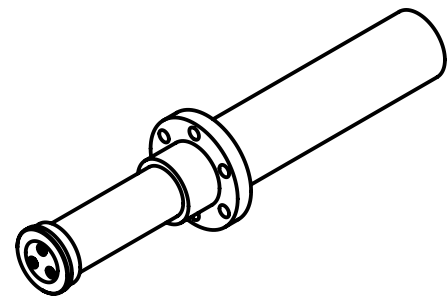
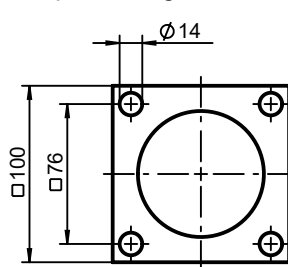


Type DBB-B
(Rear flange)

 Type DBB-K
(Front flange)


Round flange



Square flange



Stroke mm	Energy kNm (kJ)	Max. buffer force * kN	Perm. angular dev. ** degree	DBB-B / DBB-K A mm	DBB-K L mm	Weight ca. kg
50	8	180	1,5	308	150	7
100	16	180	1,4	450	200	9
150	25	180	1,3	592	250	11
200	33	180	1,2	734	300	12
250	41	180	1,1	876	350	14
300	49	180	1,0	1018	400	16
350	57	180	0,9	1160	450	18
400	65	180	0,8	1302	500	20
500	81	180	0,8	1586	600	24
600	95	180	0,8	1870	700	28
700	108	180	0,7	2154	800	32
800	117	180	0,6	2438	900	36

Intermediate stroke length, special flanges or different L-dimensions are available on request.

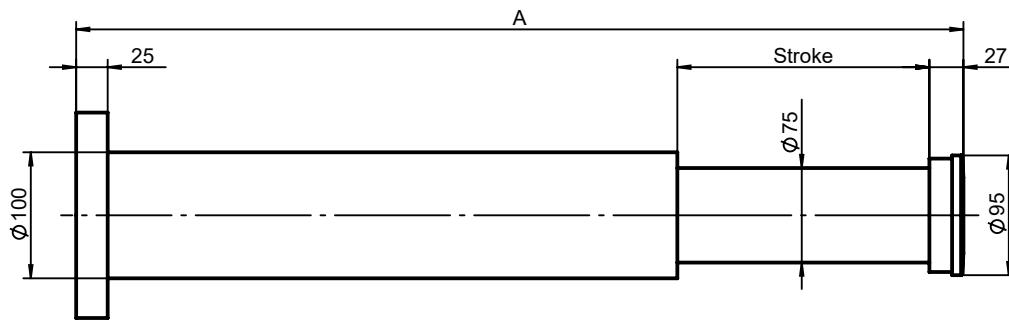
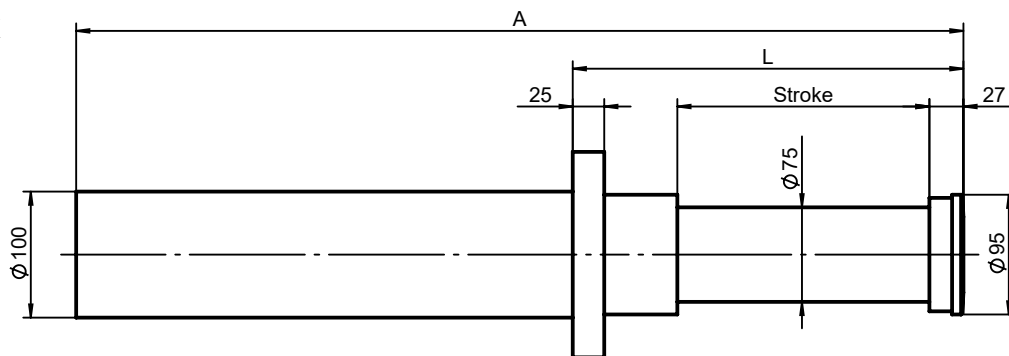
Retracting force (static) extended 1,2 kN, retracted 8,5 kN.

* for strokes > 400 mm, the initial permissible buffer force is less than the maximum value.

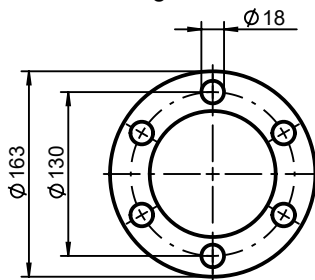
** based on the maximum permissible buffer force.

The DBB-B variant is only recommended for a stroke up to 500 mm.

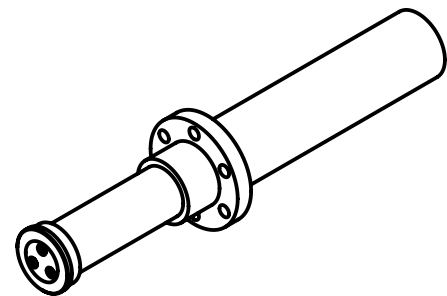
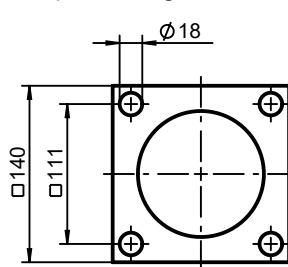
Technical data are subject to change.

Type DBB-B
(Rear flange)

Type DBB-K
(Front flange)


Round flange



Square flange



Stroke mm	Energy kNm (kJ)	Max. buffer force * kN	Perm. angular dev. ** degree	DBB-B / DBB-K A mm	DBB-K L mm	Weight ca. kg
100	34	375	1,2	437	210	17
200	68	375	1,0	704	310	23
300	102	375	0,8	971	410	29
400	136	375	0,8	1238	510	35
450	153	375	0,8	1372	560	38
500	170	375	0,7	1505	610	41
550	185	375	0,7	1639	660	44
600	201	375	0,6	1772	710	47
700	233	375	0,6	2039	810	53
800	263	375	0,6	2306	910	59
900	292	375	0,6	2573	1010	61
1000	318	375	0,6	2840	1110	67

Intermediate stroke length, special flanges or different L-dimensions are available on request.

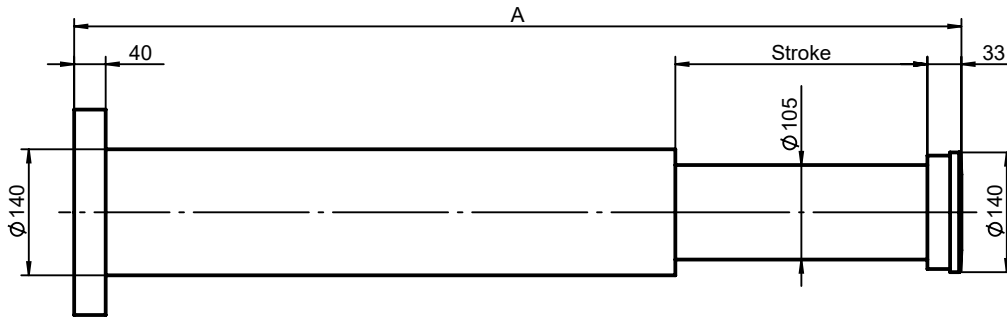
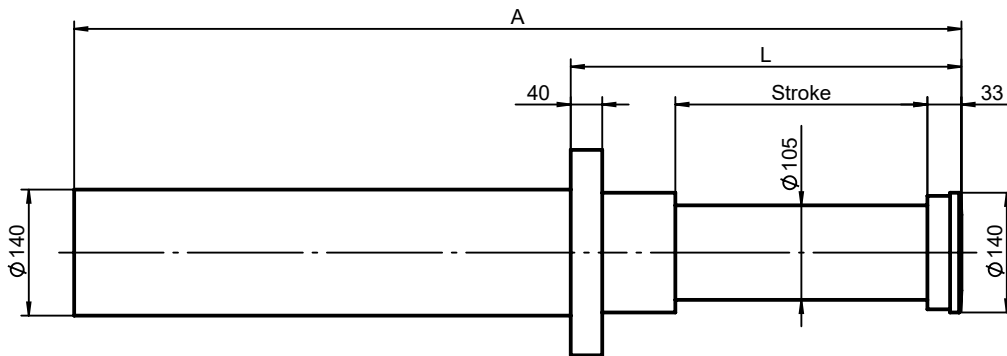
Retracting force (static) extended 4 kN, retracted 29 kN.

* for strokes > 400 mm, the initial permissible buffer force is less than the maximum value.

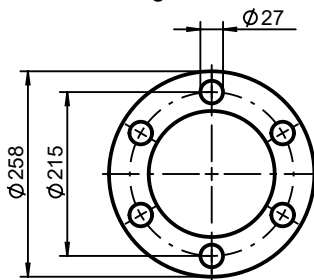
** based on the maximum permissible buffer force.

The DBB-B variant is only recommended for a stroke up to 500 mm.

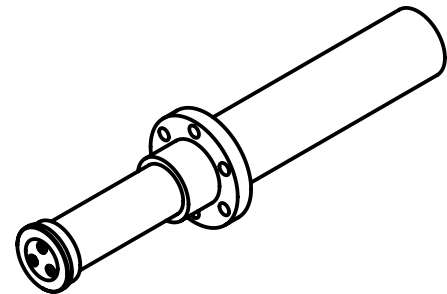
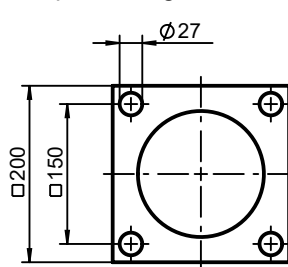
Technical data are subject to change.

Type DBB-B
(Rear flange)

Type DBB-K
(Front flange)


Round flange



Square flange



Stroke mm	Energy kNm (kJ)	Max. buffer force * kN	Perm. angular dev. ** degree	DBB-B / DBB-K A mm	DBB-K L mm	Weight ca. kg
100	68	750	1,5	472	250	43
200	136	750	1,2	732	350	55
300	204	750	1,0	992	450	66
400	272	750	0,8	1252	550	77
500	339	750	0,8	1512	650	89
600	402	750	0,8	1772	750	101
700	467	750	0,7	2032	850	113
800	529	750	0,7	2292	950	125
900	593	750	0,6	2552	1050	137
1000	654	750	0,6	2812	1150	148
1100	711	750	0,6	3072	1250	160
1200	767	750	0,6	3332	1350	172

Intermediate stroke length, special flanges or different L-dimensions are available on request.

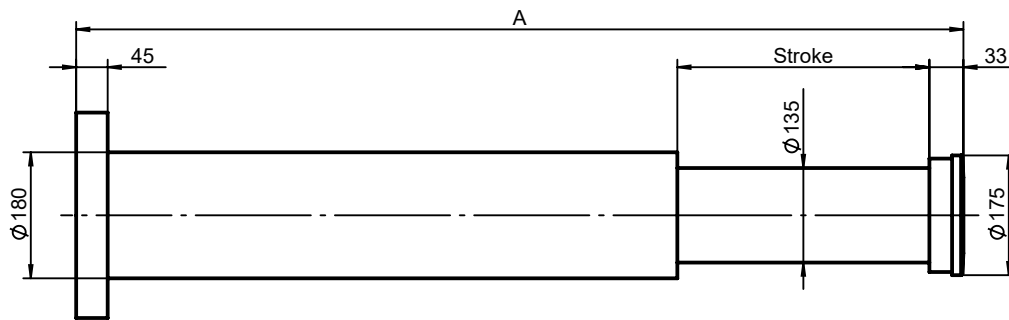
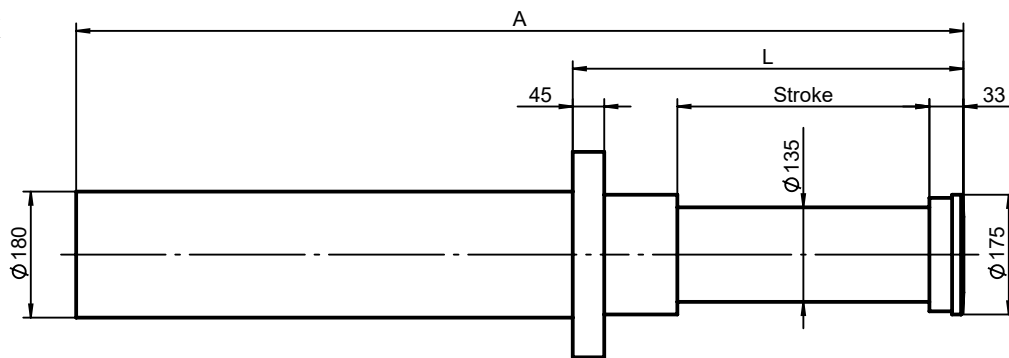
Retracting force (static) extended 5 kN, retracted 37 kN.

* for strokes > 400 mm, the initial permissible buffer force is less than the maximum value.

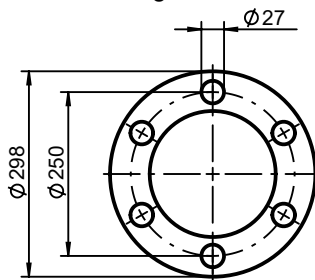
** based on the maximum permissible buffer force.

The DBB-B variant is only recommended for a stroke up to 500 mm.

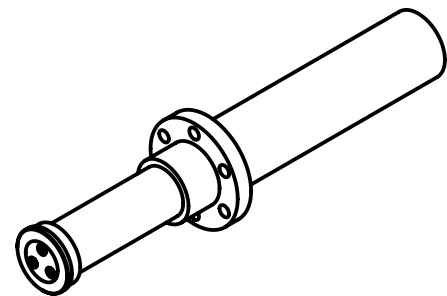
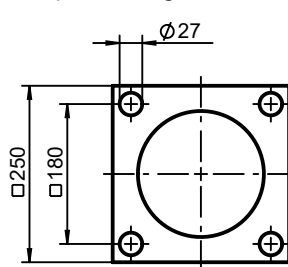
Technical data are subject to change.

Type DBB-B
(Rear flange)

 Type DBB-K
(Front flange)


Round flange



Square flange



Stroke mm	Energy kNm (kJ)	Max. buffer force * kN	Perm. angular dev. ** degree	DBB-B / DBB-K A mm	DBB-K L mm	Weight ca. kg
100	113	1250	2,5	512	275	78
200	227	1250	2,0	789	375	100
300	340	1250	1,5	1066	475	122
400	454	1250	1,1	1343	575	144
500	568	1250	0,9	1620	675	166
600	682	1250	0,8	1897	775	188
700	795	1250	0,8	2174	875	210
800	909	1250	0,8	2451	975	233
900	1023	1250	0,6	2728	1075	255
1000	1136	1250	0,6	3005	1175	278
1100	1250	1250	0,6	3282	1275	300
1200	1364	1250	0,6	3559	1375	322

Intermediate stroke length, special flanges or different L-dimensions are available on request.

Retracting force (static) extended 9 kN, retracted 62 kN.

* for strokes > 400 mm, the initial permissible buffer force is less than the maximum value.

** based on the maximum permissible buffer force.

The DBB-B variant is only recommended for a stroke up to 500 mm.

Technical data are subject to change.